

FALL 2017

www.onthebaymagazine.com

ON THE BAY

CELEBRATING LIFE IN SOUTHERN GEORGIAN BAY

Light Up Your Life

The latest lighting trends & tips

Safe & Secure

Home security goes high-tech

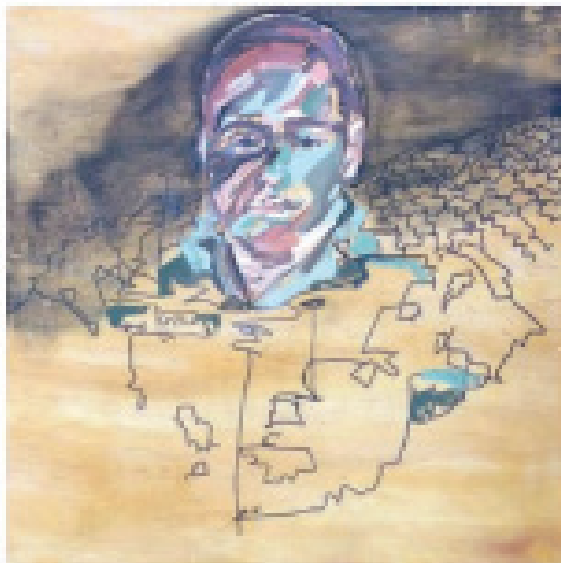
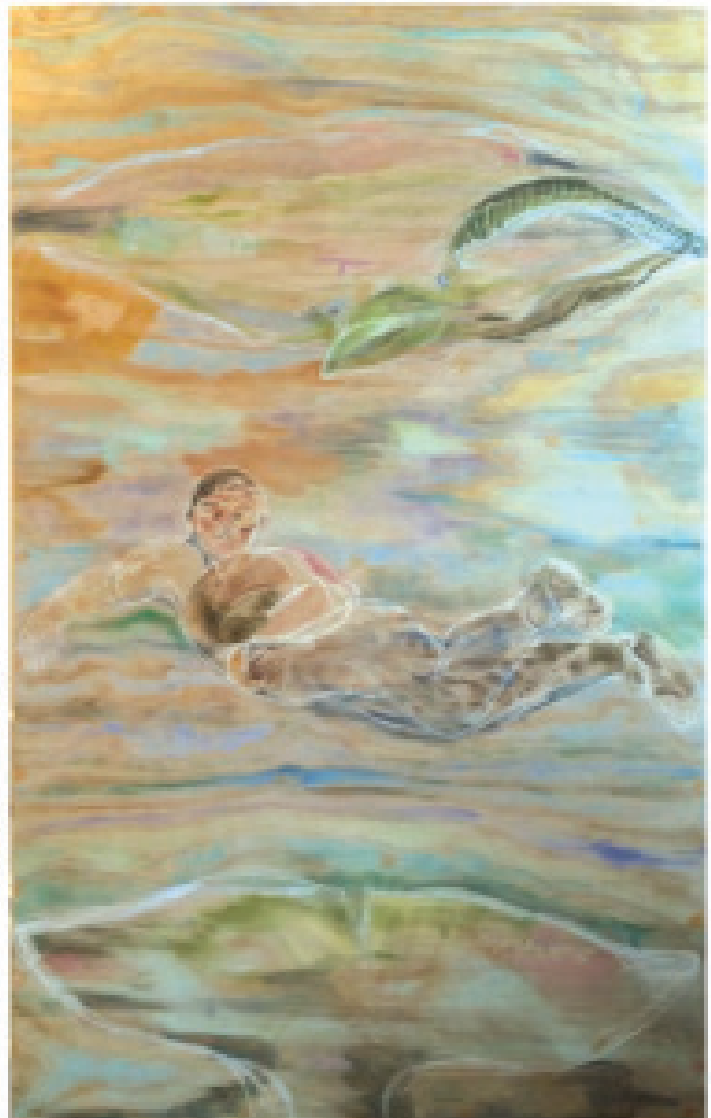
The Visionaries

What does the future hold for our region? Ten leaders speak out!

RICHARD & ANKE LEX

Celebrating **PEOPLE**

Collingwood artist Dragica Vidakovic creates timeless vignettes that trigger memories and emotions



Clockwise from top left: "Tamed In," 20x40 inches, acrylic and Conte on wood; "Arctic Water," 30x40 inches, chalk pastels on wood panel; "Facepaint," 16x16 inches, crayon and chalk on wood

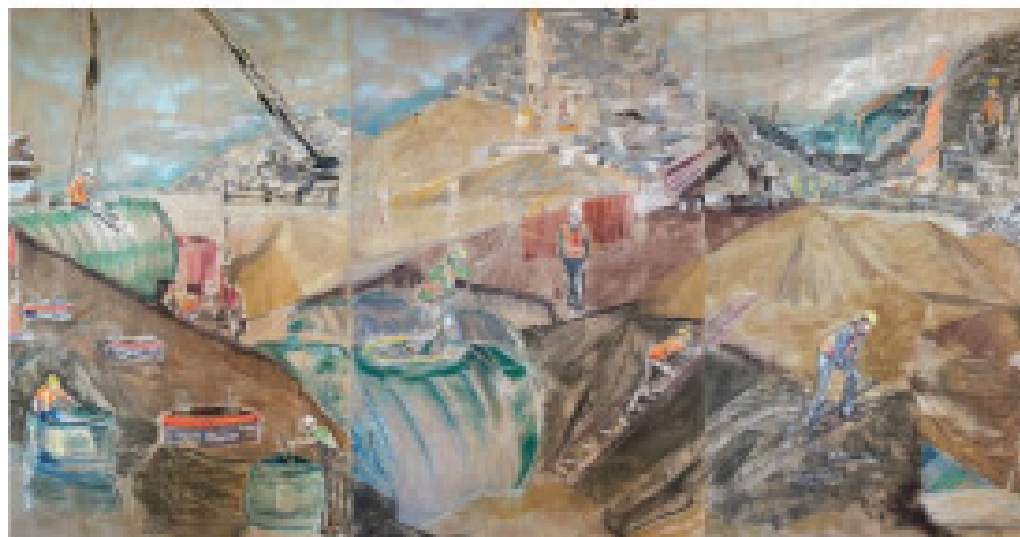
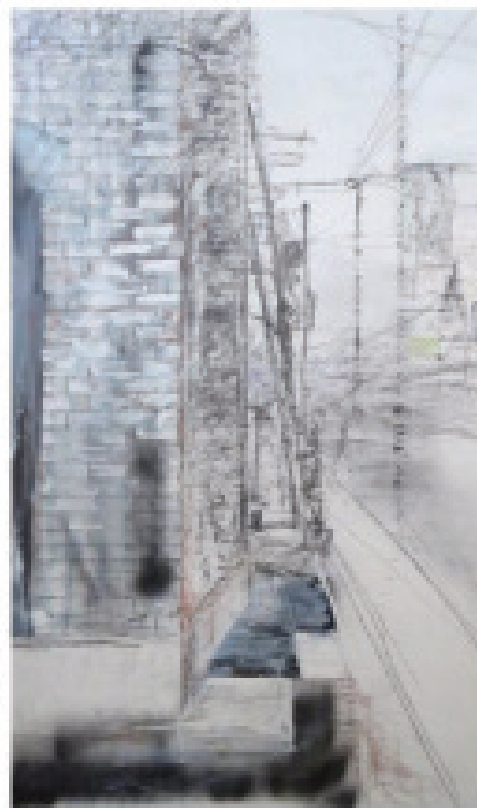
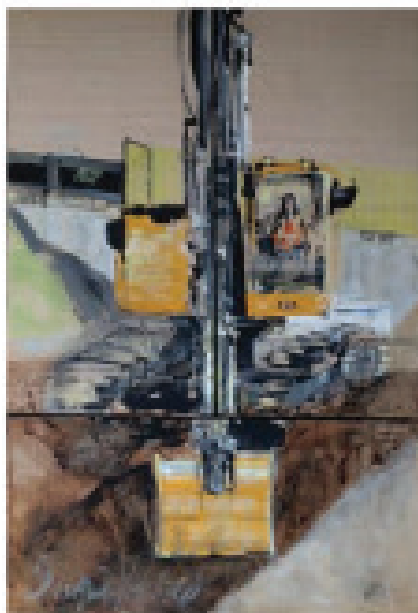
DRAGICA VIDAKOVIC

"Drawing is all about capturing the moment, the gesture and getting into the soul," says Dragica Vidakovic of her work, which brings together illustrative, design and sculptural elements to tell a story. Vidakovic first studied illustration at Sheridan College before pursuing her arts studies at OCAD in printmaking, silk screening and fabric design. Since returning to painting in 2013, her work has been juried into group shows in Toronto, Mississauga, Burlington and Collingwood and exhibited in solo shows throughout Ontario.

"My work focuses on celebrating people – who they are, what they do – no matter what the challenges may be, and most importantly, with respect," says Vidakovic. "Whether on construction sites, farming fields, in bars and restaurants or in artists' studios, I am always fascinated by how the individuals work, what muscles they use, the tools they choose and what makes them tick. Often, the work they do is unnoticed, yet it will sooner or later touch our lives."

Vidakovic is currently showing her work at Collingwood's Yonson Studios. Her website is www.dragica.com.

"I sometimes challenge myself to let loose, let the brush create the curved lines and the somewhat distorted imagery, let the person be almost obliterated or abstracted," she says. "There is a certain freedom to that. But I could not start without that human element, the person being the point of reference in all my work." ■



Clockwise from the top: "Kinetic Energy," 32 1/2x37 inches, wax and watercolour on Terracotta paper, "The Wall," 30x40 inches, latex ground, enamel spray, chalk pastels, Sharpie pen and pencil crayon on board, "Time Lapse," 14x27 inches, chalk and oil pastels, charcoal, Conté, pencil crayon and acrylic on wood, "On The Edge," 48x77 inches, acrylic and clay on wood.